

LIMITED PASTURE

- If pasture is limiting it is advisable to feed stock on hay only for a day or two before introducing the pellets from the feeder ad lib.
- Hay or straw must be available during the initial adjustment period.
- Keep the feeder full when using self feeders the doors should only be partially open in the first week to control the flow of grain and to stop gorging as problems with acidosis still occur if the feeder becomes empty and the hungry stock gorge themselves on pellets.
- Never consider feeding cattle without any form of roughage being available to it, approximately 10 – 30% of its dry matter intake should be fibre right up until it is finished. This will result in keeping digestive upsets to a minimum and better utilisation of grain being fed.

Warning: Inappropriate Autumn to Spring storage of feed products may promote mould

ABOUT **AMBOS STOCKFEEDS**

Established in 1949, **AMBOS Stockfeeds** is a family owned and operated company. We are currently manufacturing a range of stock feeds to cater for the nutritional needs of cattle, sheep, pigs, poultry, horses, ducks, rabbits and dairy.

We are based in the picturesque town of Young, located on the south west slopes of New South Wales, Australia.

Young is ideally situated some 4 hours from Sydney, the state's capital, and 2 hours from Canberra, our nation's capital.

Due to our location, **AMBOS Stockfeeds** is in the perfect position to take advantage of one of Australia's safest premium grain growing centres. The ingredients for our feeds are of the highest quality and carefully selected.

We are fully accredited under the Australian based Stock Feed Manufacturers Association 'FeedSafe' program. This ensures that the manufacture of our stockfeeds is completely safe, with rigorous testing and quality control.

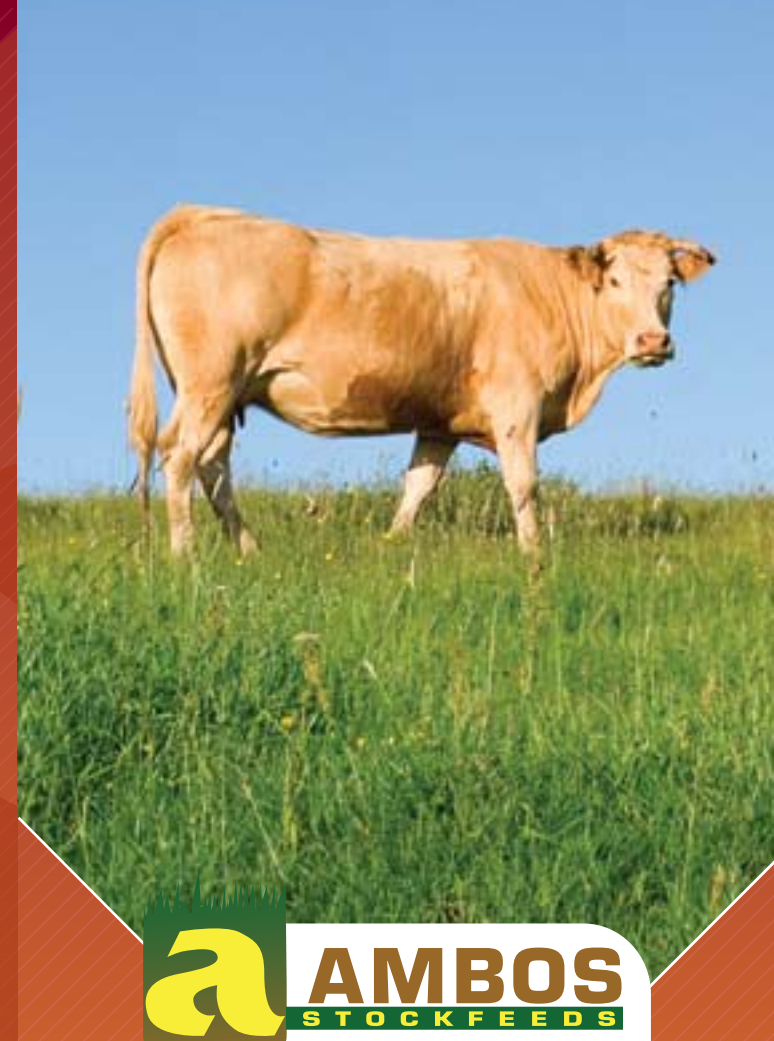
We supply both moderate and high level protein and energy feeds professionally designed by our qualified nutritionists, who are happy to discuss your particular production targets, feed design or animal requirement.

Our products are currently available through independent rural merchants, major rural groups and various rural co-operatives located throughout New South Wales, Australia.

For further information on all AMBOS Feeding Programs contact the nutritionist at Young, NSW on 02 6382 4847

Disclaimer: The information (information) contained in this document and any proceeding (following) pages are intended solely for the information of our customers. Except as prohibited by law, we disclaim and take no responsibility for any errors in, or omissions from, the information. You should not rely upon this information, but should make your own inquiries about the subject matter of this document. If you have any questions about the information you should contact us.

Conditions of Sale: The use of this product being beyond the control of the manufacturer and reseller, no warranty is given and none shall be implied as to its suitability or fitness for any particular purpose. The manufacturer accepts no responsibility for any consequence whatsoever arising from the use of this product.



a **AMBOS**
STOCKFEEDS

RUMINANTS

AUSTRALIAN MADE BUILT ON SERVICE

90 TELEGRAPH RD YOUNG NSW 2594 P 02 6382 4847 F 02 6382 4849
AUSTRALIAN MADE BUILT ON SERVICE



ambos.com.au

Superior quality pellet feeds for maximising ruminant production

AMBOS Stockfeeds have developed a range of quality pellet feeds to maximise ruminant production.

RUMINANT FEEDING PRINCIPLES

- Ruminants have a digestive system that enables them to utilize fibre such as straw, hay or silage.
- Ruminants include cattle, sheep, goats, and alpacas.
- Constant access to a fibre source is vital for maintaining performance and reducing the risk of acidosis (grain poisoning).
- Microbes (bacteria & protozoa) that inhabit the rumen break down fibre from plants to produce volatile fatty acids which are an energy source for the animal.
- These bacterial populations also break down protein and starch and when they die become a significant protein source for ruminants.
- Without a constant supply of fibre, the population of 'starch digesting bacteria' rises and the digestion of starch from grain produces lactic acid. This lowers the rumen pH and leads to poor appetite, scours, poor performance and sometimes death (lactic acidosis).

PELLET FEEDING

The ruminant supplements manufactured by **AMBOS** contain the trace minerals and vitamins as well as macro minerals and protein meals. Buffers and additives to maintain the health of the animals are standard ingredients in this product range.

The major part of the diet for ruminants is pasture and conserved forage. It is difficult to achieve a high weight gain and good feed conversion efficiency without some supplementary grain in the ration. The fibre levels of most pastures and conserved forages limit feed intake and therefore, produce moderate growth rates.

Supplementary pellets are easy to consume in a trough or self feeder and they can provide a very predictable live weight gain. These pellets must be balanced to meet the nutrient requirements of the class of stock being fed.

FEEDING GUIDE

A suggested feeding guide for ruminants on pellets is as follows:

- Acclimatise animals over a two week period.
- Introduce pellets at 0.2% of their bodyweight (BWT) over 10–14 days (If animals are being switched from grain to pellets, mix the two at a rate of 50:50 over this period, then remove the grain).
- Increase this by 0.2% BWT every second day until they are eating ad lib. Continual access to good quality fresh water and a fibre source (hay/straw) is essential. Water troughs should be cleaned every two to three days.
- All pellets contain the necessary additives and buffers to reduce the likelihood of acidosis; however animals that run out of food and gorge themselves are more likely to acquire the condition.

For further information on all **AMBOS** Feeding Programs contact the nutritionist at Young, NSW on (02) 6382 4847